

# Vocabulary Grammar and Punctuation Terminology

## Parenthesis

We use parenthesis to add extra detail to a sentence which is already grammatically correct without it. We can use **brackets**, **dashes** or **commas** to separate the parenthetical information from the main sentence.

- Mrs. Jones (**my teacher**) works in Year 5.
- The product of four and nine —**36**— is a square number.
- Michael, **who sits next to me**, is brilliant at Art.



# Vocabulary Grammar and Punctuation Terminology

## Relative Pronoun

Relative pronouns (who, which, where, that, when) introduce a relative clause. They refer back to a noun or clause that we already know.



**who**

**which**

**where**

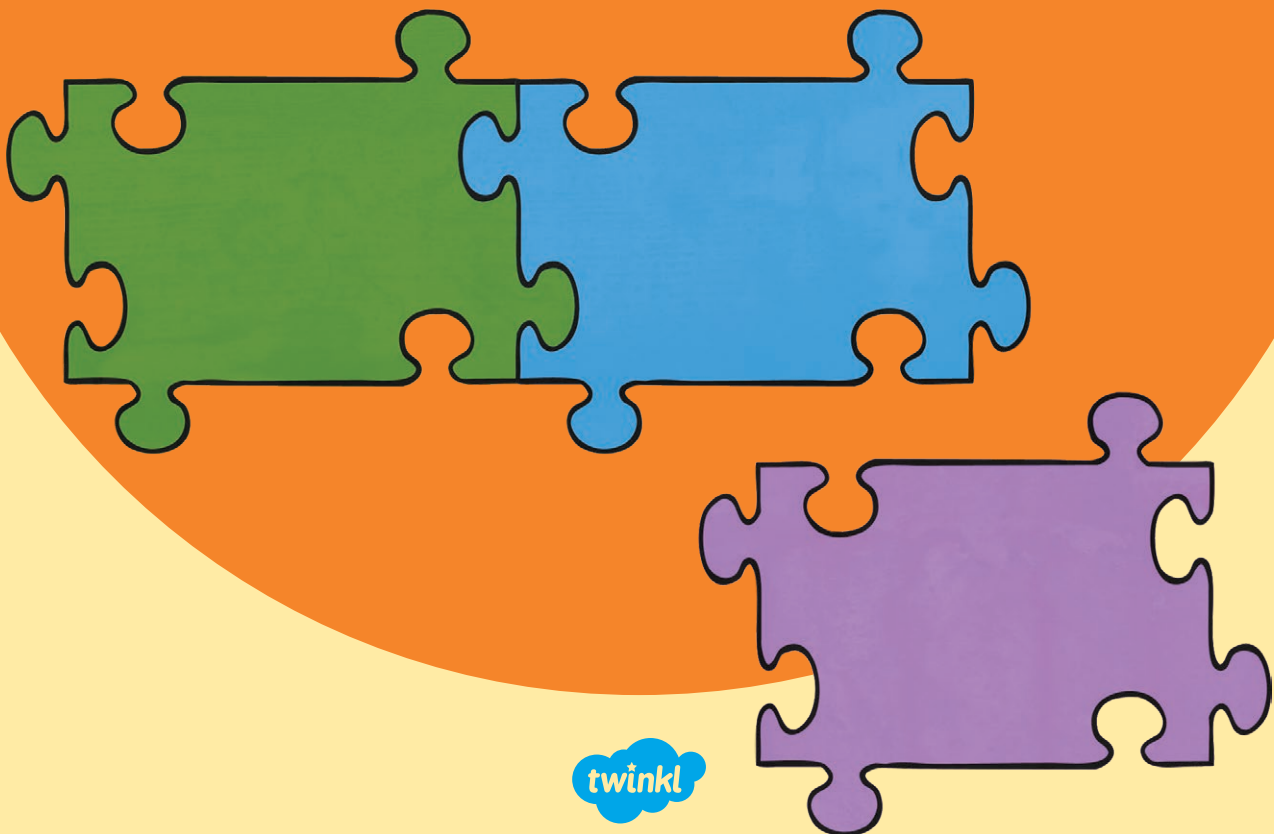
**that**

**when**

# Vocabulary Grammar and Punctuation Terminology

## Cohesion

A text which has cohesion fits logically together. The reader can see how one part moves on to another or how the end links back to the beginning. We use **cohesive devices**, such as **connective phrases** and **determiners**, to achieve cohesion.



# Vocabulary Grammar and Punctuation Terminology

## Relative Clause

A relative clause is a special type of subordinate clause which adds extra information to another noun or clause.

- **James, who never does his homework, is very lazy.**  
[the extra clause tells us more about James]

- **All the chocolate pudding was gone by the time I got in to lunch, which really annoyed me.**

[this refers to the whole previous clause about chocolate pudding]



# Vocabulary Grammar and Punctuation Terminology

## Ambiguity / Ambiguous

If a phrase, clause or sentence is ambiguous, the meaning is not clear. Often, you can solve this problem by re-ordering the sentence or using more precise punctuation.

**I rode my horse wearing red pyjamas.**  
Is it the horse that's wearing pyjamas?

Try...

**Wearing red pyjamas,  
I rode my horse.**



# Vocabulary Grammar and Punctuation Terminology

## Modal Verb

Modal verbs change or affect other verbs in a sentence. They are used to show the level of possibility, indicate ability, show obligation or give permission.

Some common modal verbs are:

**can**

**will**

**shall**

**must**

**could**

**should**

